

Fairfield Action Council for Truth & Support

presents

“Fairfield Harbour Yesterday & Today”



1974 – Shoreline Country Club



2026 – Harbour Club

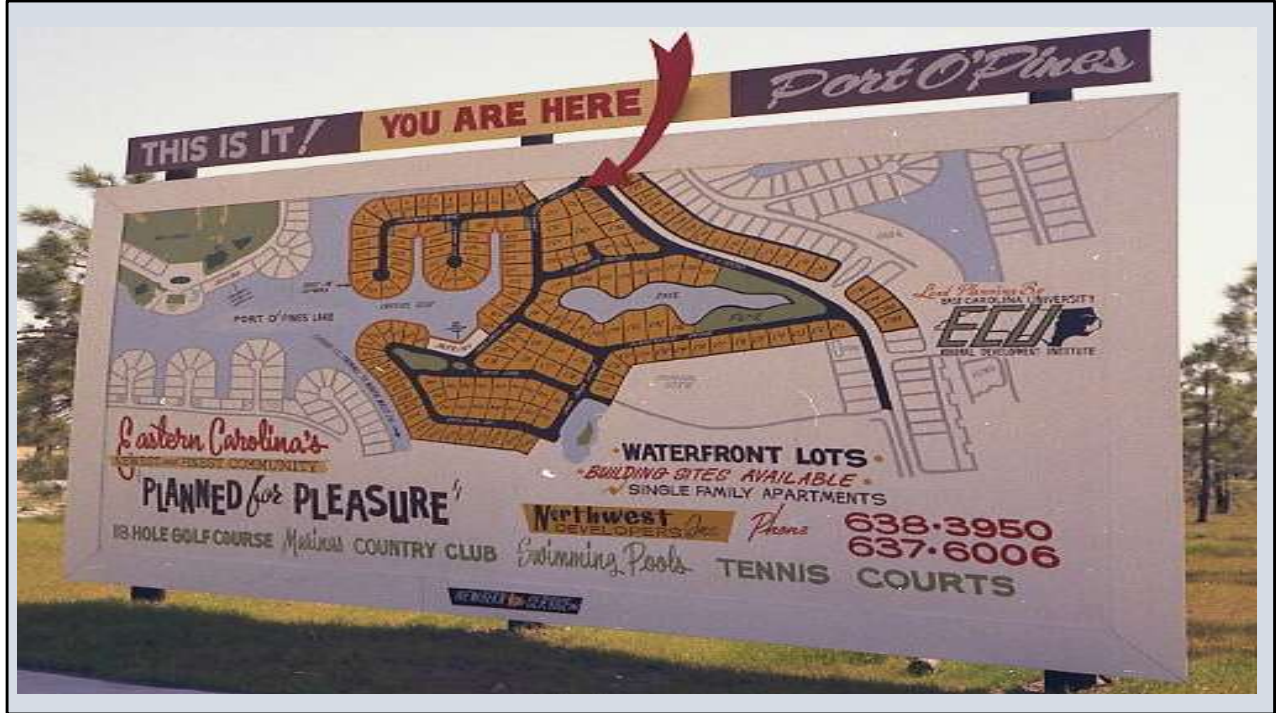
www.FHFACTS.org

HarbourFACTS@gmail.com

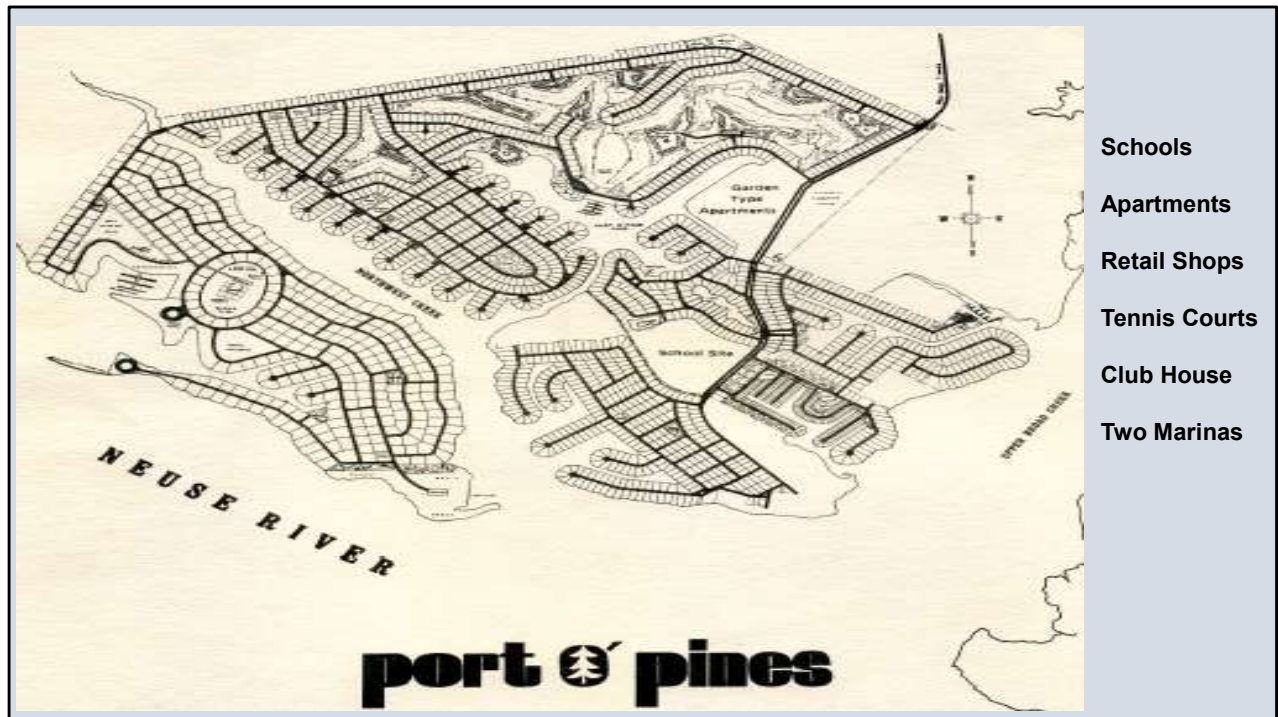
Before we were Fairfield...



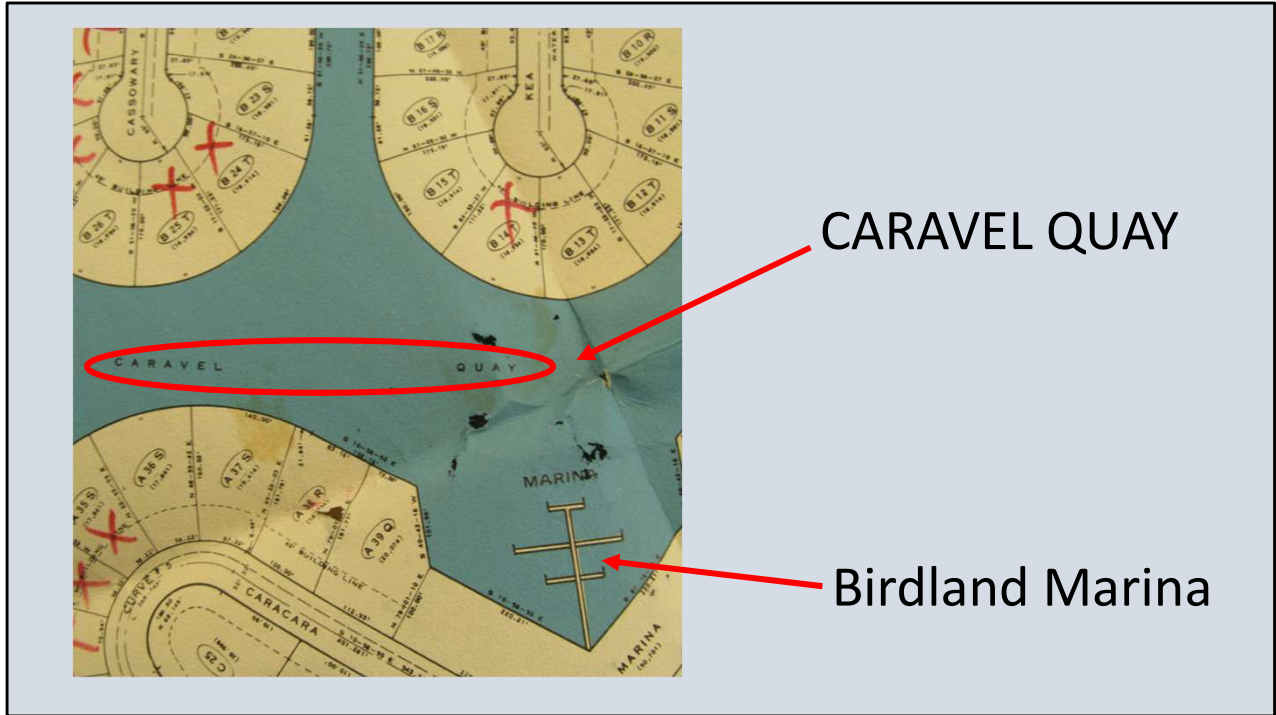
Back in the 1960's, we were a heavily wooded area reportedly with great hunting and fishing. In 1963, a massive fire burned both sides of the Neuse River.



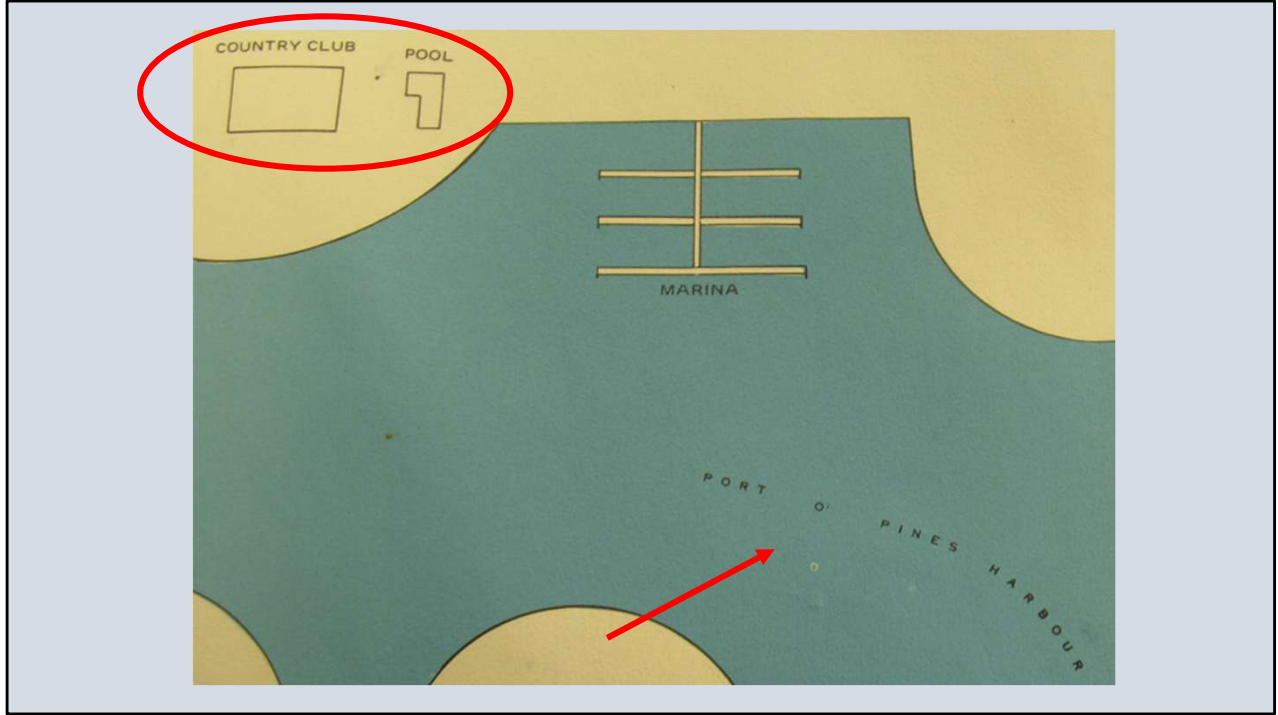
In 1969, Northwest Developers became the owner and called the community Port O' Pines. Eastern Carolina University (ECU) planned out this water and sports oriented community to accommodate 12 to 15 thousand people.



Initially it was planned as an incorporated municipality. Tracts were reserved for schools, garden apartments, shopping centers and police and fire department buildings. Dredging the canals imposed a serious financial burden for Northwest Developers and they advertised in the Wall Street Journal for additional capital. Great Northern Developers was interested, but they wanted the property for themselves.



On some of the original layouts from Richard Hoff, we discovered the body of water surrounding Birdland Marina was defined as Caravel Quay.



Also, contributed by Richard Hoff in this 1970 design is the plan for a clubhouse and pool at the location where the Shoreline Clubhouse once stood. Notice the inner harbour then known as PORT O' PINES HARBOUR.

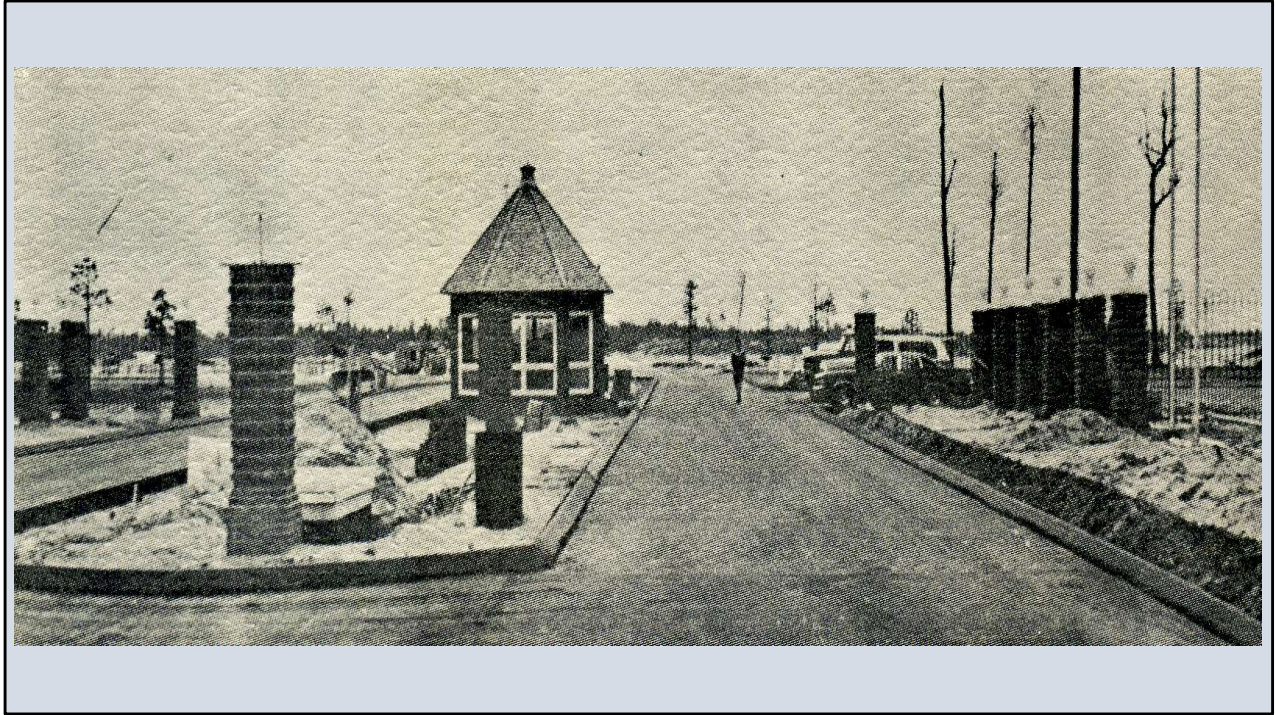
July 1971...



Treasure Cove

YOUR GETAWAY PLACE TO THE SEA

Backed by The Westinghouse Corporation, in July 1971, Great Northern Development purchased the property, changed the name to Treasure Cove and sold a million dollars worth of lots by Thanksgiving. Buyers took it on faith that the community would include a clubhouse, an 18 hole golf course, and other amenities.



The Shoreline Gatehouse in 1972. Does any of this look familiar?

Inner Harbour



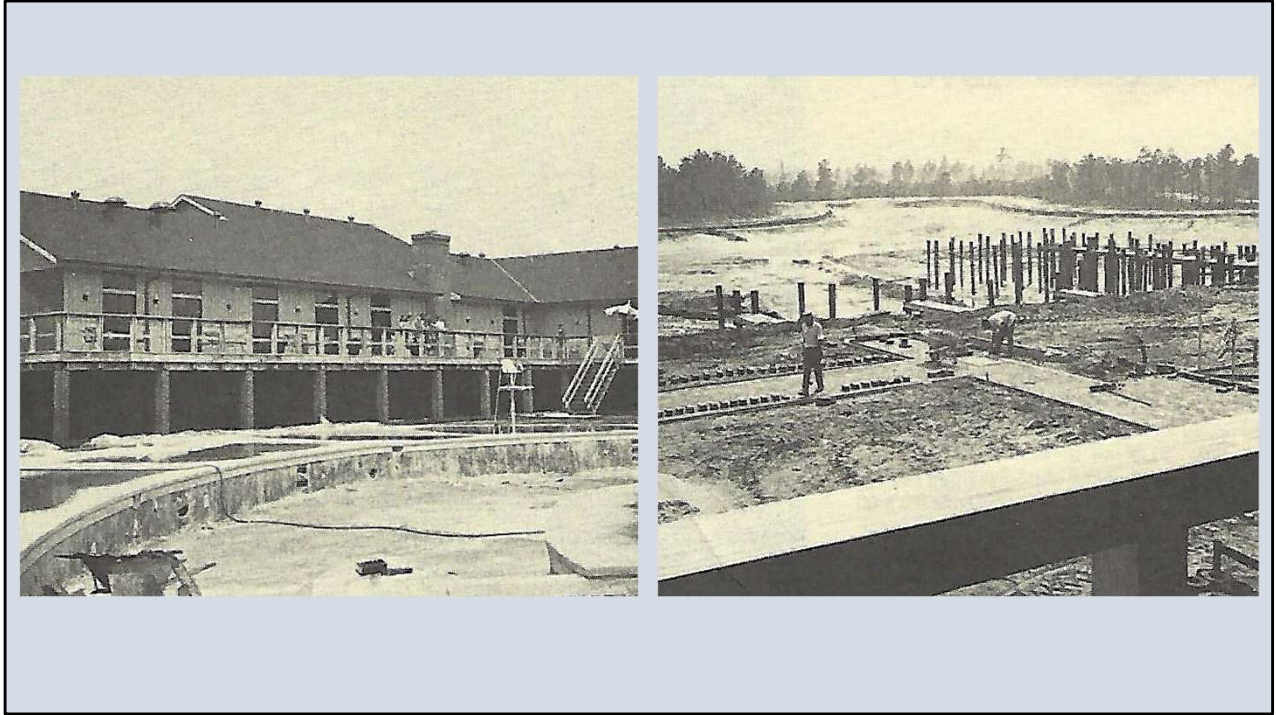
The canals in 1973 with patches of ground water. Spring Creek hadn't been opened yet to flood the canals because the bulkheads were under construction.



Close-up of bulkheads. Westinghouse Credit took over management of the property in 1973.



In late 1973 - early 1974, the Shoreline Clubhouse on Pelican Drive was under construction.



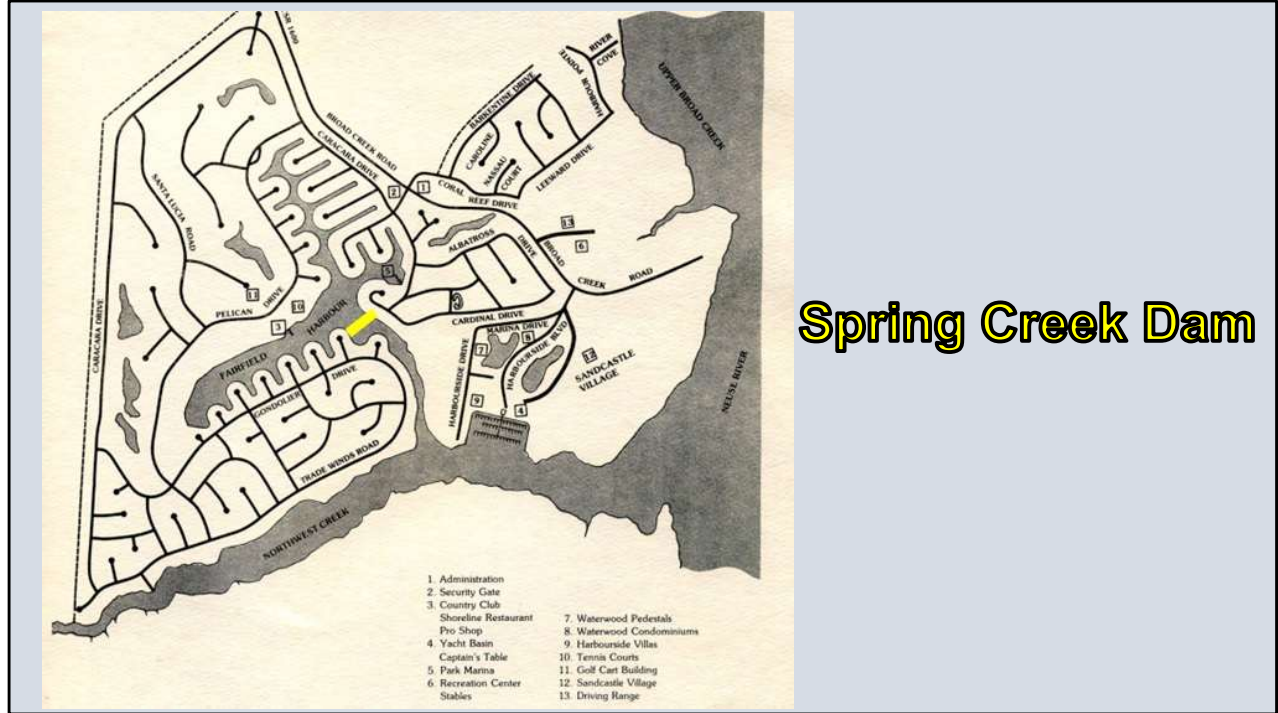
This is the back of the clubhouse during construction years. You can also see the Anchor Pool being built. The photo on the right shows a dry Shoreline Marina with the pilings ready for the decking.



July 1974. Shoreline Clubhouse opened, together with the second nine holes of the Shoreline Golf Course (now Fairfield Harbour's "green space.") Property owners were charged annual amenities fees.



May, 1975 – Grand Opening. Treasure Cove had three permanent homes and five under construction, with four more planned. Treasure Cove officially opened that summer.



Spring Creek dam. "On May 25th, 1975 a fleet of 25 boats entered the harbor and the canals for the first time." The inner harbour and canals were now filled with water.

Tabago Park



Today's Red Sail Park was then Tabago Park.

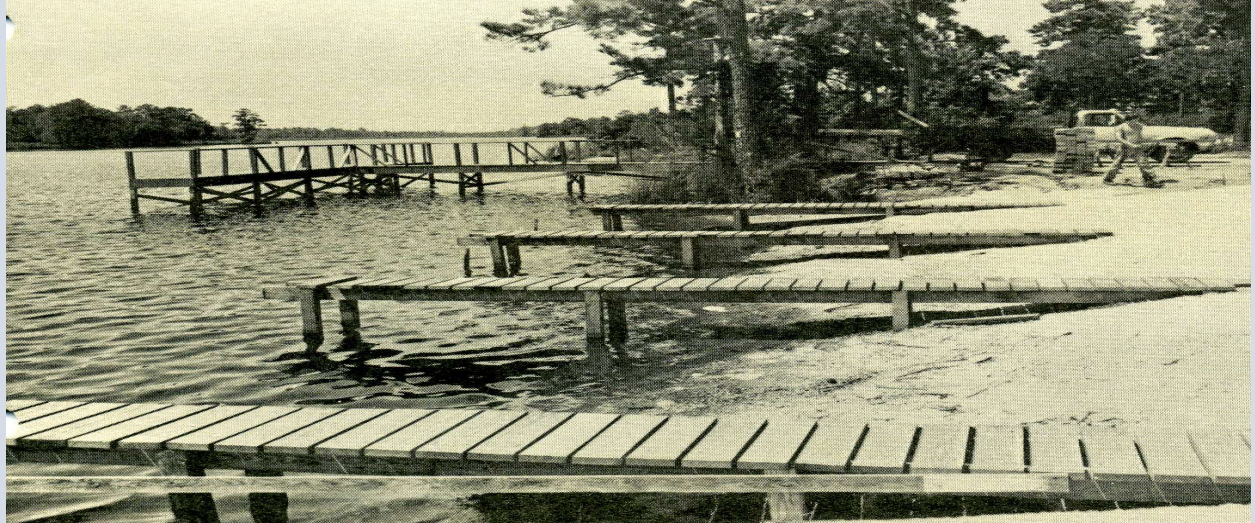


Recreation Center Stables seem to have been located near Harbour Pointe Golf Course's 4th hole, between Broad Creek Road and Coral Reef Drive before the Barkentine gate. .



Pro-Am golf tournament photos of pro-golfers at Shoreline Golf Course and armed rent-a-cops.

Fishing Pier & Boat Ramps



Fishing pier and multiple boat ramps. The fishing dock is still there and has been renovated a few times by the Fishing Club.

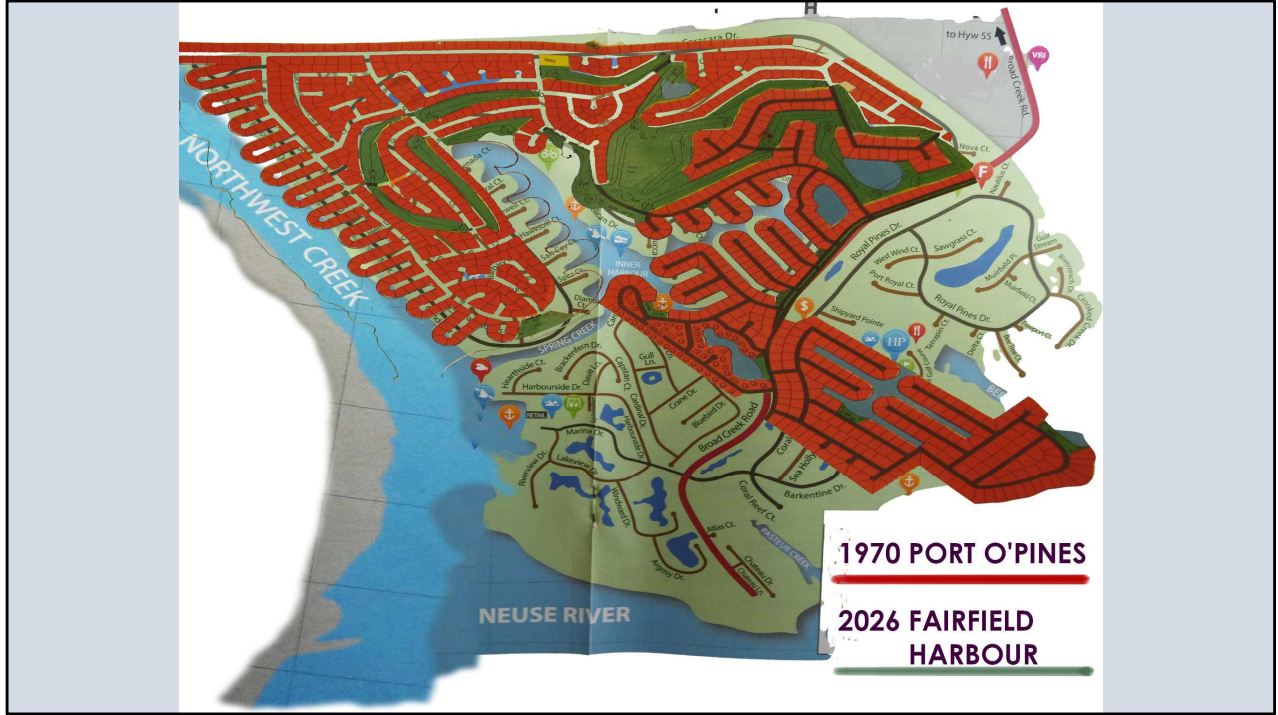
Ready to Roll



This photo is from the summer of 1977 according to Treasure Chest newsletter.



On December 5, 1977, Fairfield Communities Inc. purchased Treasure Cove and changed its name to Fairfield Harbour.



In red is the Craven County preliminary design of Port O' Pines from 1970 given to us by Richard Hoff. It is shown as an overlay to the map in the center of our phone directory. The Shroeline side looks as it was designed 50+ years ago. Notice the Harbour Pointe side with the canals that never came about.



This is the beauty that surrounds Birdland Marina today sitting on that body of water once known as Caravel Quay.



Our Shoreline Guard House still stands today.



A more up-to-date view of the Inner Harbour and all its canals. In the lower left you can see Birdland Marina.



The Harbour Club opened its doors 50 years after its predecessor, the Shoreline Clubhouse opened its doors.



Red Sail Park as we see it today. Once known as Tabago Park.



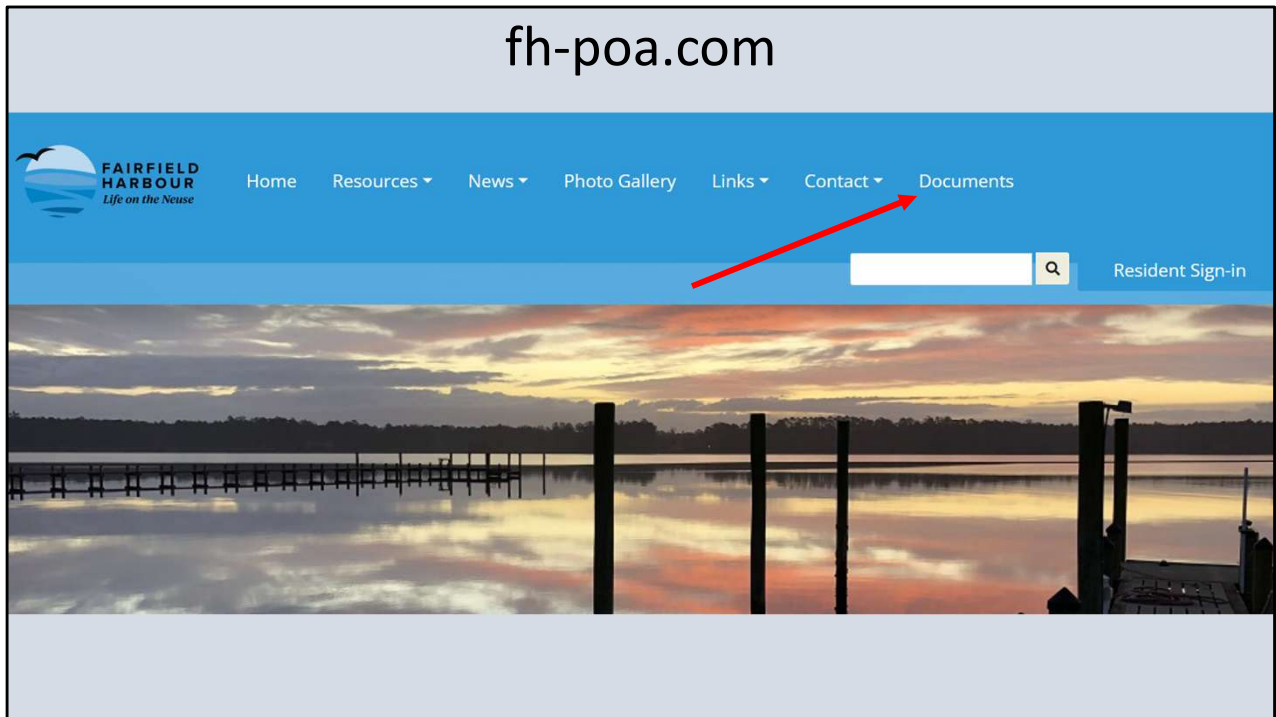
Today's new boat ramp, located next to the Harbour Club.



These crews who operate this equipment are critical for fires, medical emergencies and accidents. Minutes—sometimes seconds—can make a real difference in outcomes. I do believe they are present here today in a recruiting capacity. If nothing else, please thank them when you see them.



Harbour Pointe Golf Course clubhouse and The Pointe restaurant shown from the 9th green.



You can learn more about the history of Fairfield Harbour on this site. You do not need to sign in.

Resources		
Name	Items	Kind
About Our Community	11 Items	Public
Ancillary Documents (OBE - reference only)	1 Item	Public
Articles of Incorporation	10 Items	Public
Bylaws_POA	3 Items	Public
DOR's and Maps for Single-Family Homes	15 Items	Public
DOR's for Timeshares, Condos, & Townhomes	29 Items	Public
Forms	1 Item	Public
Harbour Pointe Golf Club_2025	1 Item	Public
History of Fairfield Harbour	12 Items	Public
Maps	13 Items	Public
Permits--Small Projects Applications (Property Control Committee/PCC)	7 Items	Public
Permits--Tree Removal Application (Property Control Committee/PCC)	2 Items	Public
Permits--Waterfront Construction (Property Control Committee/PCC)	5 Items	Public
POA Rules & Policies	11 Items	Public

You can easily spend hours investigating the information on this interesting web page.



Thank you!

Please enjoy some delicious refreshments while we clear a space for you to chat with representatives from just some of Fairfield Harbour's many clubs, organizations and committees.